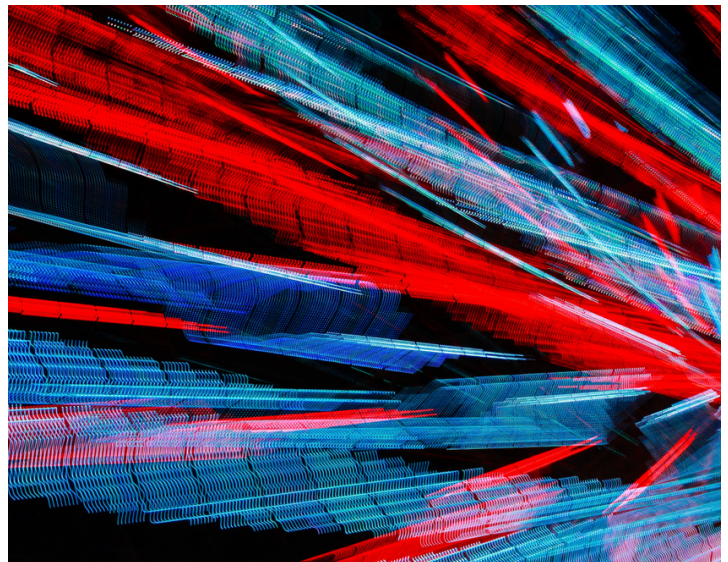
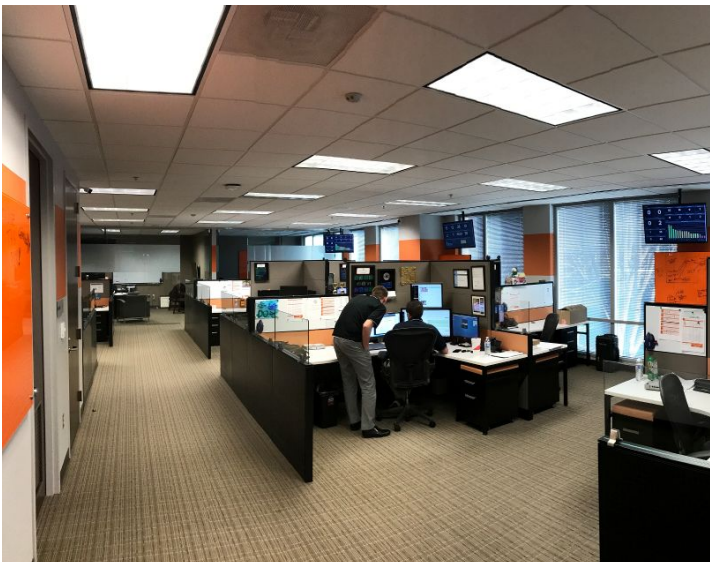


DELL Boomi



CONSULTING • IMPLEMENTATION • INTEGRATION

Accelerate your digital transformation initiatives by using Dell Boomi—the #1 Integration Cloud—to connect everything (people, processes, applications, data, and devices) you need to and easily engage your customers, regardless of time, device or location.

Company Profile

We work with Fortune 1000 companies worldwide in many vertical sectors to provide the effective solutions using our services, consulting and products division. To stay competitive in today's fast-paced electronic world, it's crucial to plan for your technology to not only keep pace with - but to enhance - your business growth.

We have extensive experience in state-of-the-art networking, technology infrastructure and business growth strategies. We can design a step-by-step, cost-effective plan for you to achieve optimum ongoing productivity for your company.

We offer

- ***Innovative and reliable IT solutions***
- ***Immense experience without an immense price***
- ***Short-term and long-term assistance***
- ***Procurement, set-up and training***
- ***Ongoing technology management and support***

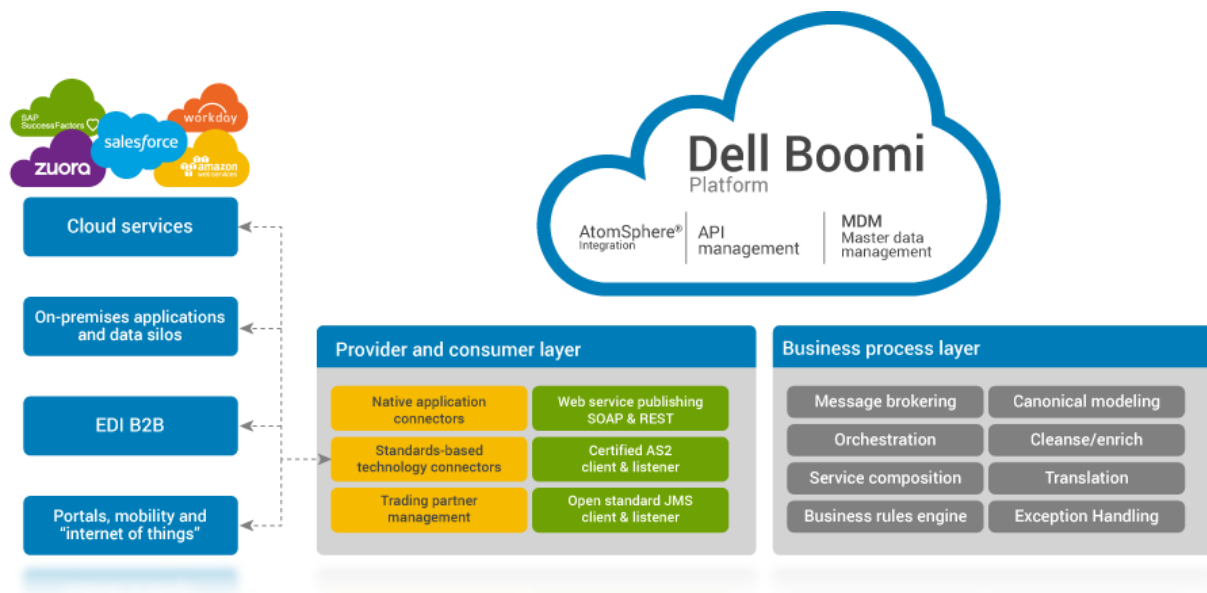
Committed to Build *Solutions* and Create Rewarding Results!

We strive to excel in the invention and development of the industry's most advanced technologies into value for our clients and customers giving them professional and best class services; thereby helping businesses throughout the world harness their full potential.

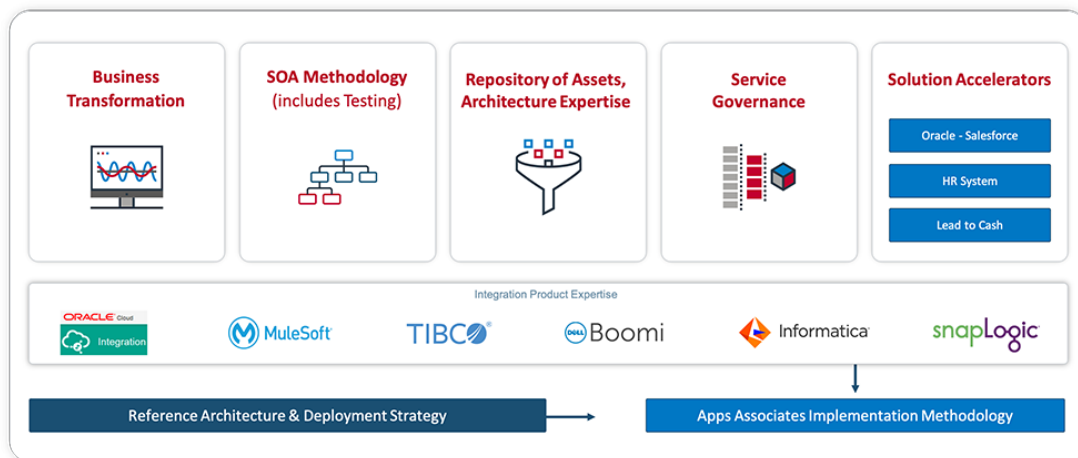
We solve our clients' toughest challenges by providing matched services in strategy, consulting, technology and operations.

Dell Boomi is the Industry Leading and first 100% Cloud-based Integration Platform. It connects any Combination of Cloud and On-premise Applications without Software or Coding. Sysha is a Dell Boomi Certified Partner specialized in enterprise-grade solutions for all types of integration needs. We work closely with Dell Boomi to deliver complex, yet cost-effective integration solutions to help customers accelerate business agility and achieve rapid digital transformation.

Using pre-built templates and data models from past integration solutions, we help our clients quickly get started on integration projects with applications across the organization; Salesforce, NetSuite, Oracle EBS, Oracle Cloud (Fusion), SAP, Workday and more. Our Hybrid Integration methodology helps simplify and achieve rapid time to value by reducing data and application integrations by weeks, months and even years!

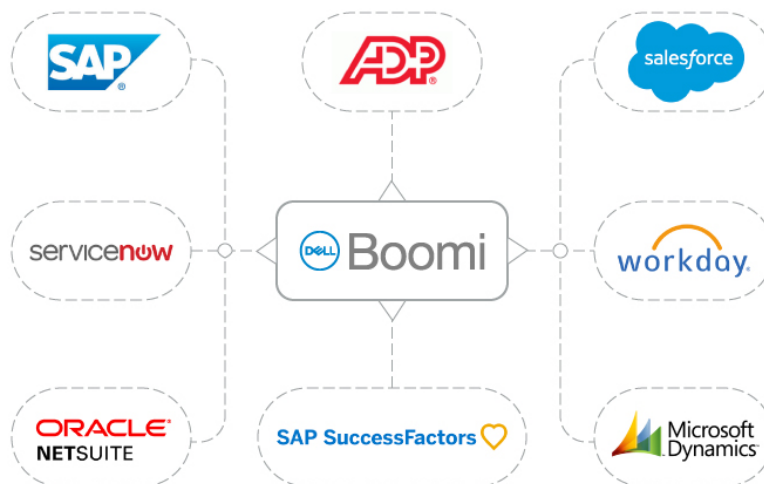


With applications running in the Cloud and databases installed on-premise, efficient systems integration is vital. Sysha approaches each integration as a unique opportunity to collaborate and help clients understand the various integration options available to them.



We have developed reference models and solution accelerators based on our experience and expertise in IT integration and business process transformation. The framework covers an end-to-end solution for BPM and Integration.

By offering a wide range of consulting services that include strategy, implementation, integration, and managed services, we've partnered with clients across various verticals such as Life Sciences, Retail, Financial Services, Manufacturing and Software, to name a few. All require a range of integration solutions from those in the Cloud ERP space looking for middleware expertise, to companies seeking Salesforce, Netsuite and other integrations, to companies seeking to implement a new middleware tool and/or migrating from one middleware tool to another.



Key offerings

- **Consulting**
 - **iPaaS Maturity Assessment**
 - **Boomi Advisory Consulting**
 - **Architectural Consulting**
- **Implementation**
 - **Dell Boomi iPaaS**
 - **ESB to iPaaS migration**
 - **Cloud Integration**
 - **Hybrid Integration**
 - **Legacy Modernization**
- **Managed Services**
 - **Operations Support**
 - **Migration Support**
 - **24x7 Dedicated Support**

AI in Enterprise Integration

With new and cutting-edge methodologies backed up by AI to pursue digital transformation, business leaders are increasingly relying on adaptable and scalable integration strategies, with the delivery of some core value-added benefits:

- Business users are armed with automotive AI tools to carry out integration tasks in a seamless manner, thereby eliminating the dependency on integration specialists and core IT, developers. This will solve more complex problems with greater ease and maximum efficiency in the pursuit of comprehensive integration of all data-points and processes within the enterprise.
- An AI-oriented integration roadmap will offer an intelligent approach towards data integration and deployment by following the directions from configurable and pre-packaged components. The range of modules can reportedly be run with the assistance of bots.
- The Boomi platform itself would leverage from the immense potential of Data Sciences and AI. In this context, several capabilities such as conversational AI experience can possibly enable business leaders to connect systems for discreetly designed applications, and then pursue overall integration strategy of the operational state of the entire platform in perspective.

Boomi and Cloud-based Integration

When we speak of the role of Boomi in integration strategy, there are instances of customers being happy with 3-4 days of turnaround time than the entire typical four-week project. This also involves and encompasses the quality of stored enterprise data, along with support for the seamless exchange of information between the database and enterprise application.

Secure Roadmap

A powerful connected platform that can collate data from different end-points can become a reality with the Boomi integration platform. The underlying capabilities can also bypass integrity issues with a well-defined cloud-based strategy that can help firms overcome the challenges posed by silos.

Collaborated Approach

Skilled Boomi developers are poised to coordinate seamlessly - and influence internal IT teams at the same time - towards regular integration routines, apart from their contribution in crucial API management and middleware tasks. The low-code environment is great and comes handy in achieving these specific set of goals.

Managed Service Integrators

Typical Boomi integrations bring data impact issues that could be upstream or downstream. The newer implementation models can offer provision to choose third-party Managed Services from their original provider. This will also ensure the handling and elimination of bottleneck issues to attain a stable enterprise integration with Boomi.

Looking Forward

The investments made in IT ecosystem and marketing can take businesses only so far, particularly if they do not have a holistic approach to build the IT ecosystem. As IT system expands beyond the periphery into the mainstream of consumer and enterprise markets, integrations with multiple components must gear up to help their organizations take advantage of the tremendous opportunities created by the ongoing business digitization. It's time for organizations to empower their companies with reliable IT products and services that make good on the promise of smart, connected devices that elevate everything from personal wellness/hygiene and driving, through manufacturing, logistics management and air travel. With ever-greater blending of IT into business, it is necessary for the testing teams to upskill beyond traditional functional testing and gear up for integrated testing of embedded software, IT solutions and big data — and to understand their influence on one another.

For more information and view all case studies visit: <http://www.syshainc.com/>



Follow Us

Locate Us:

4100 Spring Valley Rd, STE 400
Farmers Branch, TX. 75244

Call us:

1-(800)-232-1206
+469-532-2346

Write to Us:

info@syshagroup.com

